

# Ner Li

Trad. Hanukah song

184 **Reverently**

Violin 2

Viola

Violoncello

This system contains measures 184 through 189. The Violin 2 part features a melodic line with eighth and sixteenth notes. The Viola part provides a harmonic accompaniment with similar rhythmic patterns. The Violoncello part plays a steady bass line with half and quarter notes.

190

Vln. 2

Vla.

Vc.

This system contains measures 190 through 195. The Violin 2 part continues the melodic development. The Viola part maintains its accompaniment role. The Violoncello part provides a consistent bass foundation.

196

Vln. 2

Vla.

Vc.

This system contains measures 196 through 201. The Violin 2 part shows more melodic activity. The Viola and Violoncello parts continue their respective parts, supporting the overall texture.

202

Vln. 2

Vla.

Vc.

This system contains measures 202 through 207. The Violin 2 part features a more active melodic line. The Viola and Violoncello parts provide harmonic support with sustained notes and moving lines.

208

Vln. 2

Vla.

Vc.

214

Vln. 2

Vla.

Vc.

220

Vln. 2

Vla.

Vc.

224

Vln. 2

Vla.

Vc.

# Ner Li

Violin 2

Trad. Hanukah song

184 **Reverently**



188



195



201



207



213



218



223



# Ner Li

Viola

Trad. Hanukah song

**Reverently**

184



191



197



203



209



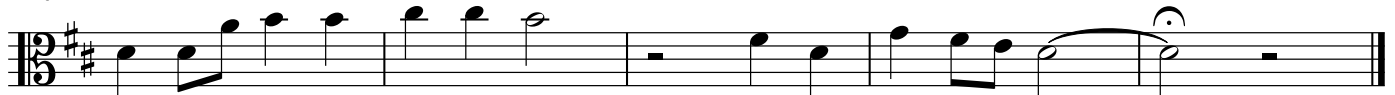
215



220



224



# Ner Li

Violoncello

Trad. Hanukah song

184 **Reverently**



191



198



205



212



219



224

